



Mazu Sail Cloth Retained Tear Resistance in %

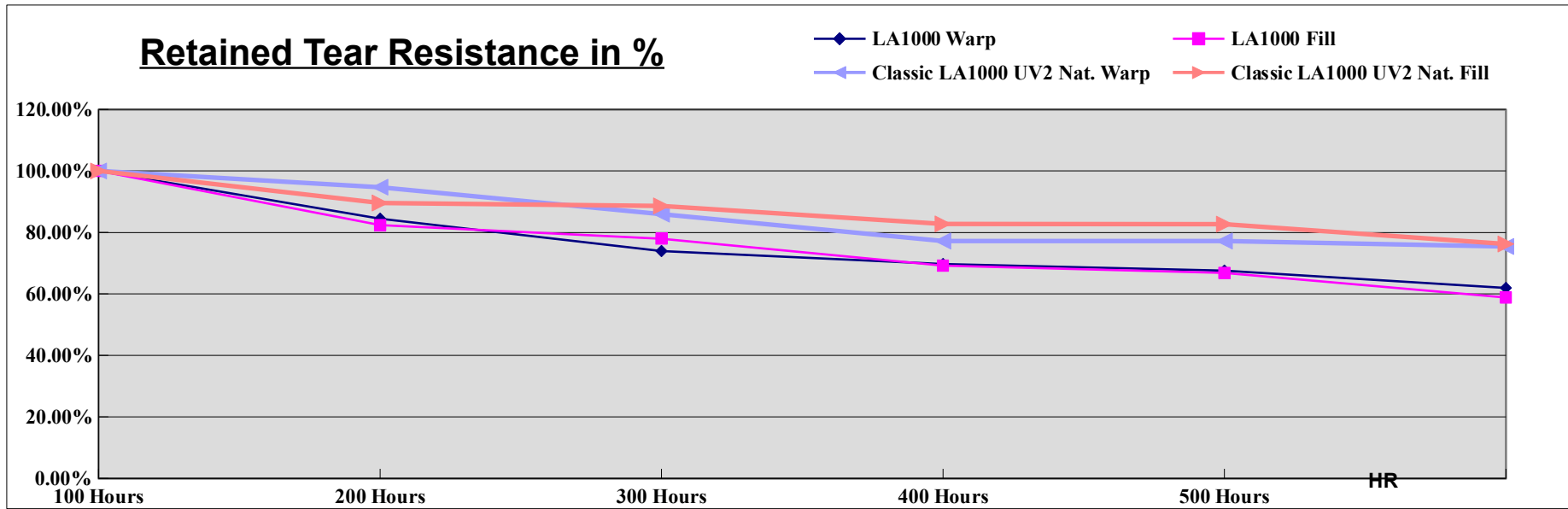
TEARING TEST REPORT

Date: Nov. 21, 2012

Styles	LA1000		Classic LA1000 UV2 Nat.	
	Warp	Fill	Warp	Fill
Non-Exposed	7.10	12.50	5.70	10.10
100 Hours UV	6.00	10.30	5.40	9.05
200 Hours UV	5.25	9.75	4.90	8.95
300 Hours UV	4.95	8.65	4.40	8.36
400 Hours UV	4.80	8.35	4.40	8.35
500 Hours UV	4.40	7.35	4.30	7.70
Total Loss (300HR)	-30.28%	-30.80%	-22.81%	-17.23%

Retained Tear Resistance in %

Styles	Non-Exposed	100 Hours	200 Hours	300 Hours	400 Hours	500 Hours
LA1000 Warp	100.00%	84.51%	73.94%	69.72%	67.61%	61.97%
LA1000 Fill	100.00%	82.40%	78.00%	69.20%	66.80%	58.80%
Classic LA1000 UV2 Nat. Warp	100.00%	94.74%	85.96%	77.19%	77.19%	75.44%
Classic LA1000 UV2 Nat. Fill	100.00%	89.60%	88.61%	82.77%	82.67%	76.24%

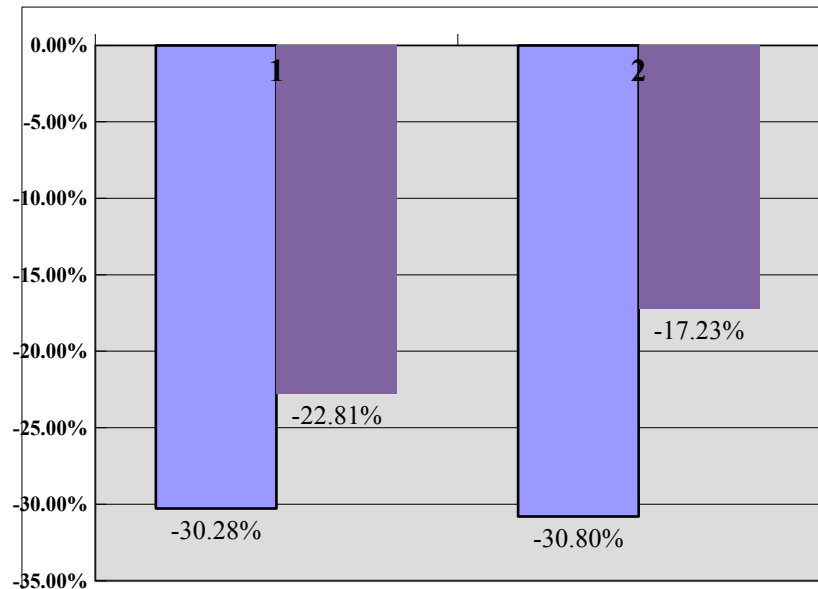


Tear Test

Development of tenacity after 300 hours of UV exposure.

- (1) sample size 5cmX15~20cm
- (2) the distance between UV light and sample is 25cm
- (3) temperature control about 50°C

Styles	Warp	Fill
LA1000	-30.28%	-30.80%
Classic LA1000 UV2 Nat.	-22.81%	-17.23%



Mazu Sailcloth tear test method is proving our theories and therefore enabling us to use the information to assure our products remain on the leading edge of fabric technology. Mazu Sailcloth assumes no liability for the above information.